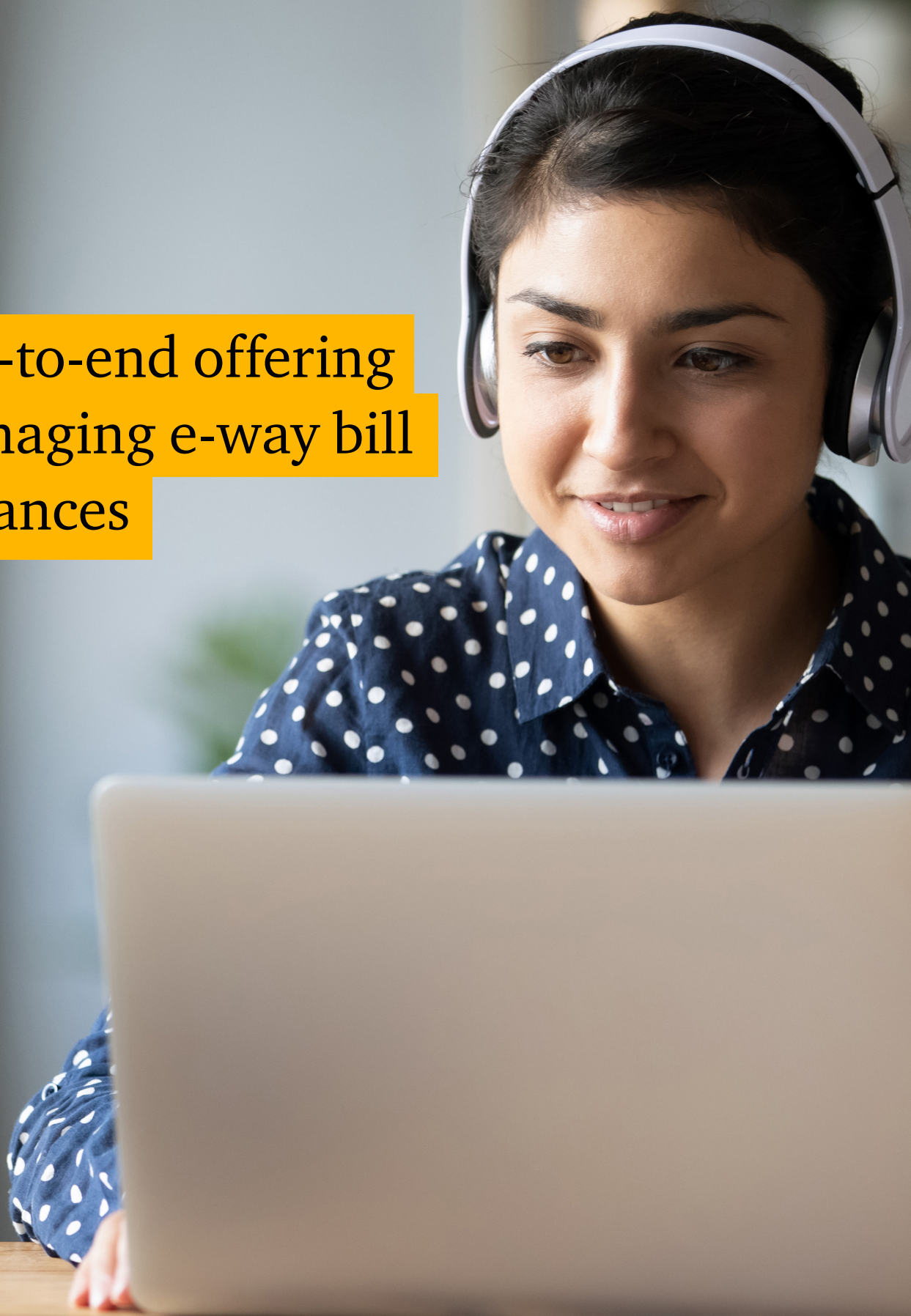




## Navigate E-Way Bill Solution

An end-to-end offering  
for managing e-way bill  
compliances



# Our solution

For movement of goods across India, the GST law mandates generation of the e-way bill (EWB) number electronically, a document/number to be carried by the person-in-charge of conveyance.

Navigate EWB Solution is an end-to-end offering for managing EWB compliance. It integrates with existing enterprise resource planning (ERP)/source systems, ensuring a seamless and smooth transition with minimum changes to current processes.

The solution also integrates with Navigate E-invoicing to ensure that details reported for e-invoicing and EWB compliances are consistent.



## Why Navigate EWB?



### Flexibility

- ERP/billing system agnostic
- Deployment on leading cloud platforms and on premise
- Multiple integration models – flat file, API and manual



### Experience

- EWB: Leading real-time solution – over 50 million EWBs generated, 3200 GSTINs, 600 companies
- Leading tax-technology solution provider across sectors
- Transformation: Extraction/transformation experience – over 2.5 billion transactions processed



### Tax support

- Large pool of tax professionals
- Need-based support/updates on application





## Features

## Benefits



### Auto-exclusion of documents not required for EWB

The solution provides the option to auto exclude documents not liable to EWB (e.g. service invoice) from EWB generation.



### Configurable data validation checks

The solution provides a comprehensive list of validation checks which are configurable. The user can switch on/off any validation check as per business requirement.



### Auto generation of EWB

In case of transactions without any validation errors, the solution can automatically push the data to the EWB portal for generation of EWB without requiring any front-end intervention. Therefore, it does not require users to log into the solution for EWB generation.



### Cancellation of EWB

EWB can be cancelled within 24 hours of EWB generation as per statutory guidelines. So, an option to trigger EWB cancellation within the statutory time limit is available.



### Compatibility

A cockpit can be deployed to manage EWB compliance within prominent ERPs.



### Reports

Multiple reports are available in the solution for analysis of EWB compliance at location level, user level, etc.



### Seamless integration with ERPs/source systems

Multiple options for data ingestion are available to enable seamless data flow between the client's ERPs/source systems and the solution. Options for data integration are:

- API-based integration for real-time data flow
- flat file based integration for scheduled data flow
- manual file upload from solution.



### Quick to deploy and scalable

The solution can be quickly deployed and is scalable to ensure EWB generation of voluminous transactions.



### Data accuracy and real-time monitoring

The solution provides 100+ validation checks in order to ensure data accuracy. Errors are on a real-time basis and the document is not sent for IRN generation.



### Intuitive and cost-effective



# About PwC

At PwC, our purpose is to build trust in society and solve important problems. We're a network of firms in 152 countries with over 328,000 people who are committed to delivering quality in assurance, advisory and tax services. Find out more and tell us what matters to you by visiting us at [www.pwc.com](http://www.pwc.com).

PwC refers to the PwC network and/or one or more of its member firms, each of which is a separate legal entity. Please see [www.pwc.com/structure](http://www.pwc.com/structure) for further details.

© 2024 PwC. All rights reserved.

For further information, write to us at: [in\\_navigatetax@pwc.com](mailto:in_navigatetax@pwc.com)

## Contact us

### **Siddharth Mehta**

Tax Technology Leader

[siddharth.m@pwc.com](mailto:siddharth.m@pwc.com)

### **Prashanth Agarwal**

Partner

[prashanth.agarwal@pwc.com](mailto:prashanth.agarwal@pwc.com)

## pwc.in

Data Classification: DC0 (Public)

In this document, PwC refers to PricewaterhouseCoopers Private Limited (a limited liability company in India having Corporate Identity Number or CIN : U74140WB1983PTC036093), which is a member firm of PricewaterhouseCoopers International Limited (PwCIL), each member firm of which is a separate legal entity.

This document does not constitute professional advice. The information in this document has been obtained or derived from sources believed by PricewaterhouseCoopers Private Limited (PwCPL) to be reliable but PwCPL does not represent that this information is accurate or complete. Any opinions or estimates contained in this document represent the judgment of PwCPL at this time and are subject to change without notice. Readers of this publication are advised to seek their own professional advice before taking any course of action or decision, for which they are entirely responsible, based on the contents of this publication. PwCPL neither accepts or assumes any responsibility or liability to any reader of this publication in respect of the information contained within it or for any decisions readers may take or decide not to or fail to take.

© 2024 PricewaterhouseCoopers Private Limited. All rights reserved.

SG/32432